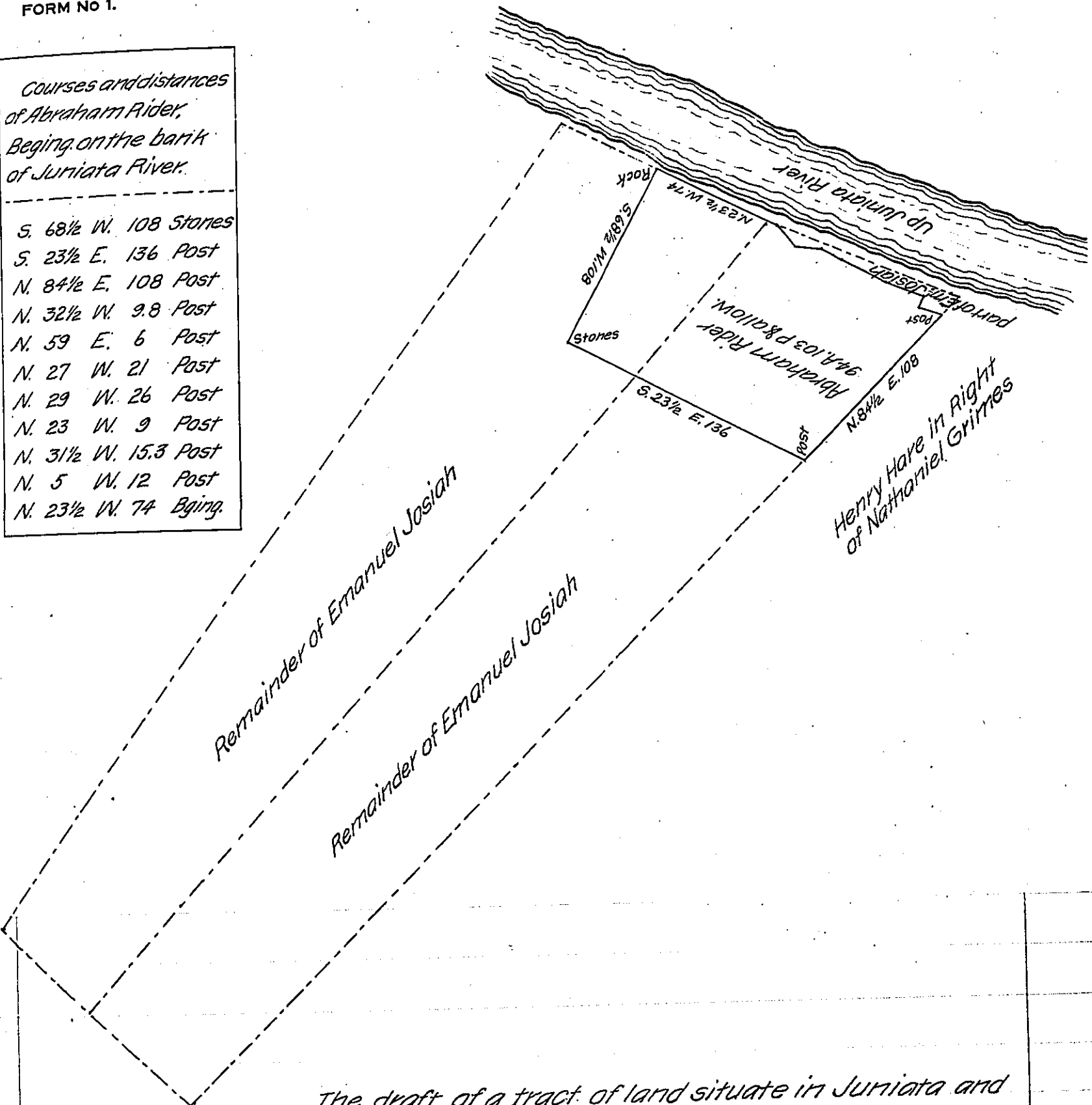


FORM No 1.

*Courses and distances  
of Abraham Rider,  
Begining on the bank  
of Juniata River.*

S. 68½ W. 108 Stones  
 S. 23½ E. 136 Post  
 N. 84½ E. 108 Post  
 N. 32½ W. 9.8 Post  
 N. 59 E. 6 Post  
 N. 27 W. 21 Post  
 N. 29 W. 26 Post  
 N. 23 W. 9 Post  
 N. 31½ W. 15.3 Post  
 N. 5 W. 12 Post  
 N. 23½ W. 74 Bging.



*The draft of a tract of land situate in Juniata and  
 Oliver Townships, Perry county, containing 94 A. 103 P. & allow<sup>ce</sup> Surveyed No-  
 vember 19<sup>th</sup> 1838 for Abraham Rider including part of 306 A. 99 P. & allow.  
 Survey<sup>d</sup> on location No 3511 for 300 Acres dated April 27<sup>th</sup> 1767 to Emanuel  
 Josiah. Also part 300 A. 98 ps. & allow. Surveyed on location No 4434 to  
 James Josiah for 300 A. dated Sep<sup>r</sup> 29<sup>th</sup> 1767.*

*W<sup>m</sup> West, D. S.*

*Jacob Salady  
 To ~~John Taylor~~, Esq<sup>r</sup> Surveyor  
 General of Pennsylvania.*

*IN TESTIMONY that the above is a copy of the original remaining on file in  
 the Department of Internal Affairs of Pennsylvania, made  
 conformably to an Act of Assembly approved the 16th day of  
 February, 1833, I have hereunto set my Hand and caused  
 the Seal of said Department to be affixed at Harrisburg,  
 this eighteenth day of October 1907.*

*Alcary Houck*  
 Secretary of Internal Affairs.